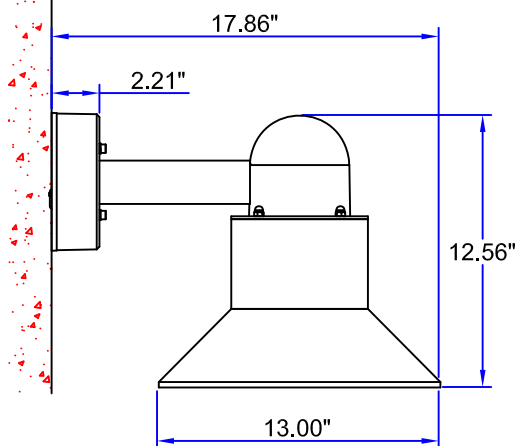


INSTALLATION AND SERVICE MANUAL

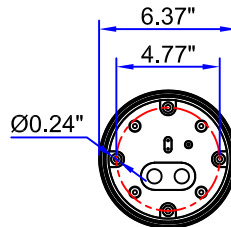
LIGMAN
LIGHTING USA

For installation of Duomo small shade wall light COB.
Model. UDU-30123-DARK SKY

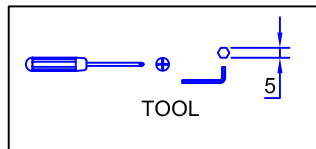
Product drawing (dimensions)



SUITABLE FOR WET LOCATIONS

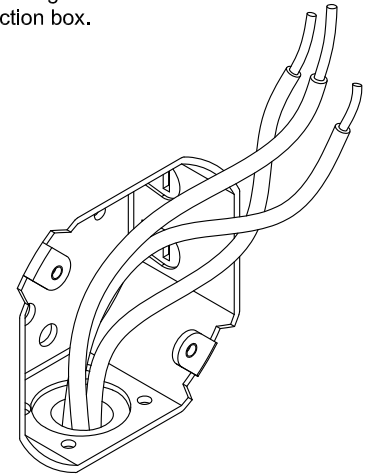


MOUNTING DETAIL



NOTE

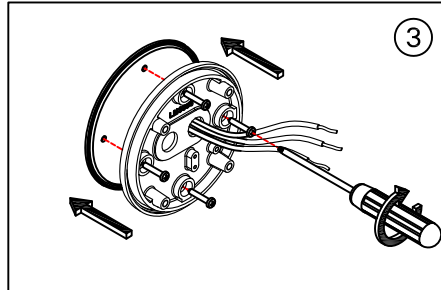
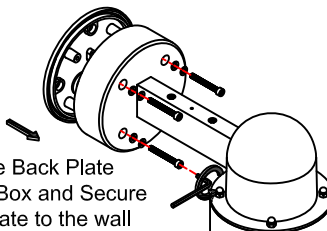
Mounts over
a 3"Octagonal
Junction box.



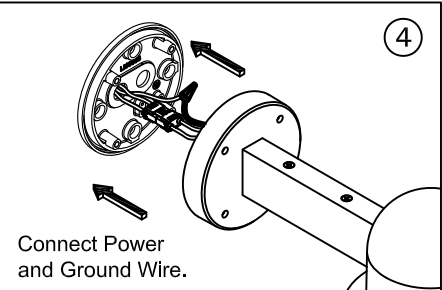
Install Gasket between wall
and Back Plate.

②

Position the Back Plate
over the J Box and Secure
the back plate to the wall

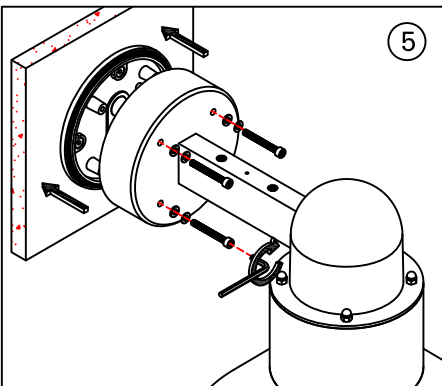


③

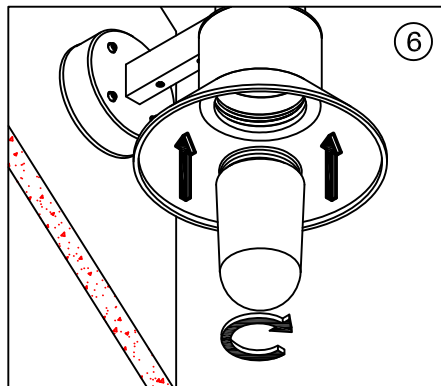


④

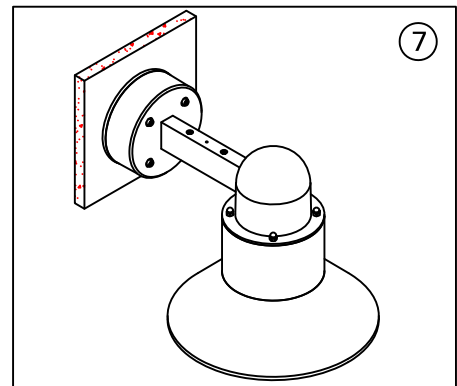
Connect Power
and Ground Wire.



⑤



⑥



⑦

Notice to installer :

- 1.WIRING INSTRUCTIONS** Warning : RISK OF FIRE AND ELECTRICAL SHOCK. : FIXTURE MUST BE INSTALLED BY A QUALIFIED ELECTRICIAN ONLY>FIXTURE IS INTENDED FOR INSTALLATION IN ACCORDANCE WITH THE NATIONAL ELECTRICAL CODE, LOCAL AND FEDERAL CODE SPECIFICATIONS. DISCONNECT POWER BEFORE SERVICING.
- 2.This fixture has a VOLTAGE SPECIFIC BALLAST**,Check that the supply voltage is the same as the installed ballast voltage.

Ligman Lighting USA

7144 NE Progress Court, Hillsboro
Oregon, 97124, USA
Tel : 503 645 0500 | Fax : 503 645 8100

www.ligmanlightingusa.com

UDU-30123 10/05/21 REV.0 FACE
1/1

FM-TS-13-2/15-03-2561/Rev.3